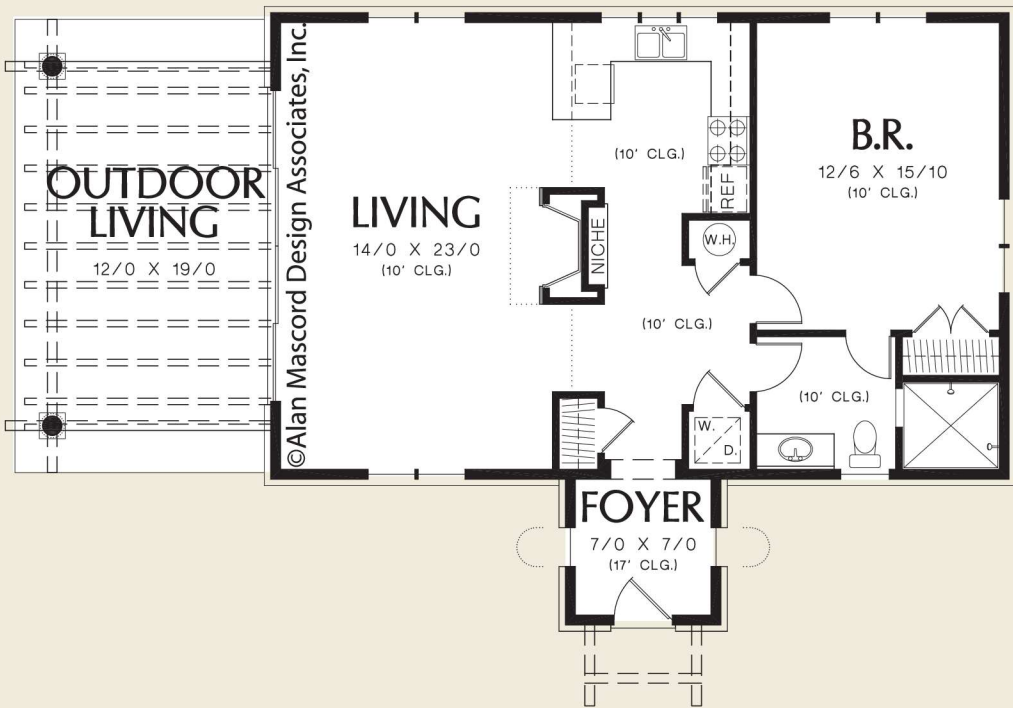




©Alan Mascord Design Associates, Inc.



Total Area	972 Sq. Ft
Width 49'-6"	Depth 31'-6"
Height	(Main Flr to Peak): 19'-3" (to Midpt of Roof): 18'-3"



ALAN MASCORD DESIGN ASSOCIATES, INC
2187 NW Reed St, Suite 100, Portland, OR 97210 · 503.225.9161
mascord.com | houseplans.co