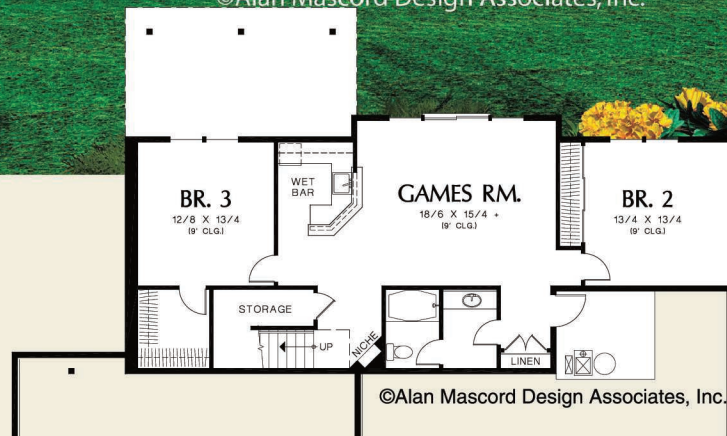
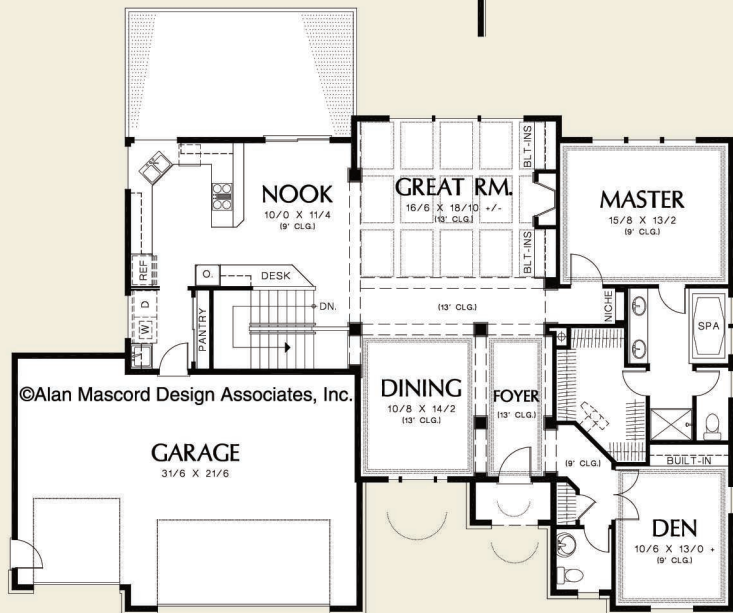




©Alan Mascord Design Associates, Inc.



©Alan Mascord Design Associates, Inc.



©Alan Mascord Design Associates, Inc.



Main Floor	1743 Sq. Ft
Lower Floor	1155 Sq. Ft
<b>Total Area</b>	<b>2898 Sq. Ft</b>
<b>Width</b>	<b>Depth</b>
67'-0"	46'-0"

**Height** (Main Flr to Peak): 21'-7"  
(to Midpt of Roof): 15'-3"

Plan Designed for Sloping Lots



**ALAN MASCORD DESIGN ASSOCIATES, INC**  
2187 NW Reed St, Suite 100, Portland, OR 97210 · 503.225.9161

mascord.com | houseplans.co