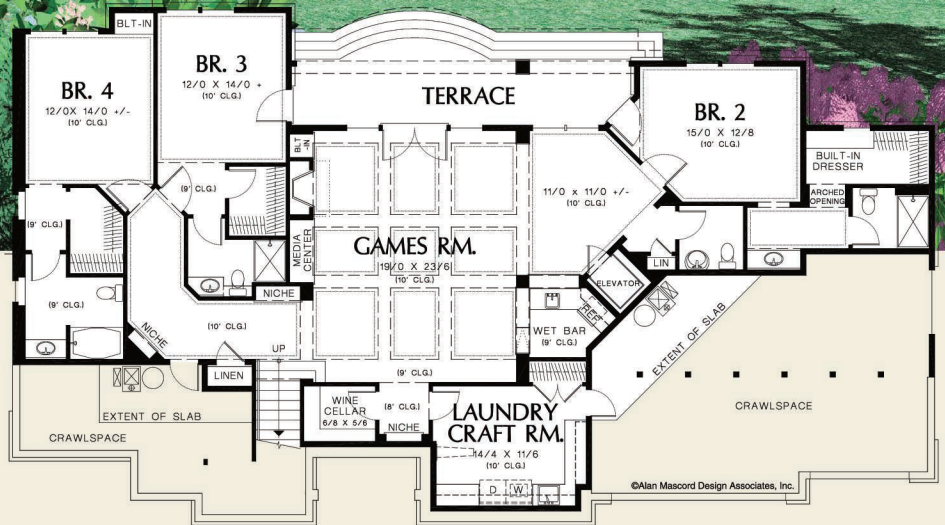




©Alan Mascord Design Associates, Inc.



©Alan Mascord Design Associates, Inc.



©Alan Mascord Design Associates, Inc.



Main Floor	2602 Sq. Ft
Lower Floor	2440 Sq. Ft
Total Area	5042 Sq. Ft

Width	Depth
88'-0"	50'-0"

Height (Main Flr to Peak): 27'-11"
(to Midpt of Roof): 20'-7"

Plan Designed for Sloping Lots



ALAN MASCORD DESIGN ASSOCIATES, INC
2187 NW Reed St, Suite 100, Portland, OR 97210 · 503.225.9161

mascord.com | houseplans.co