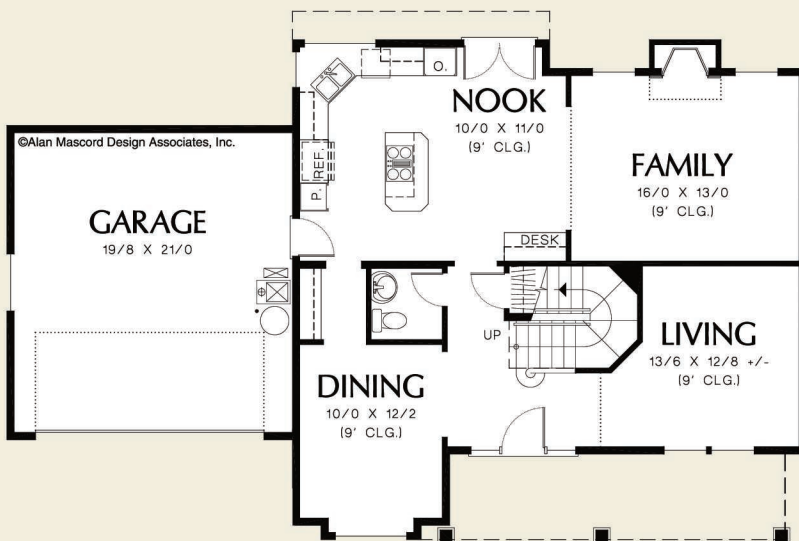




©Alan Mascord Design Associates, Inc.



©Alan Mascord Design Associates, Inc.

Upper Floor	1050 Sq. Ft
Main Floor	1070 Sq. Ft
Total Area	2120 Sq. Ft
Width	56'-0"
Depth	37'-0"
Height	(Main Flr to Peak): 30'-2" (to Midpt of Roof): 24'-1"



ALAN MASCORD DESIGN ASSOCIATES, INC
2187 NW Reed St, Suite 100, Portland, OR 97210 · 503.225.9161

mascord.com | houseplans.co