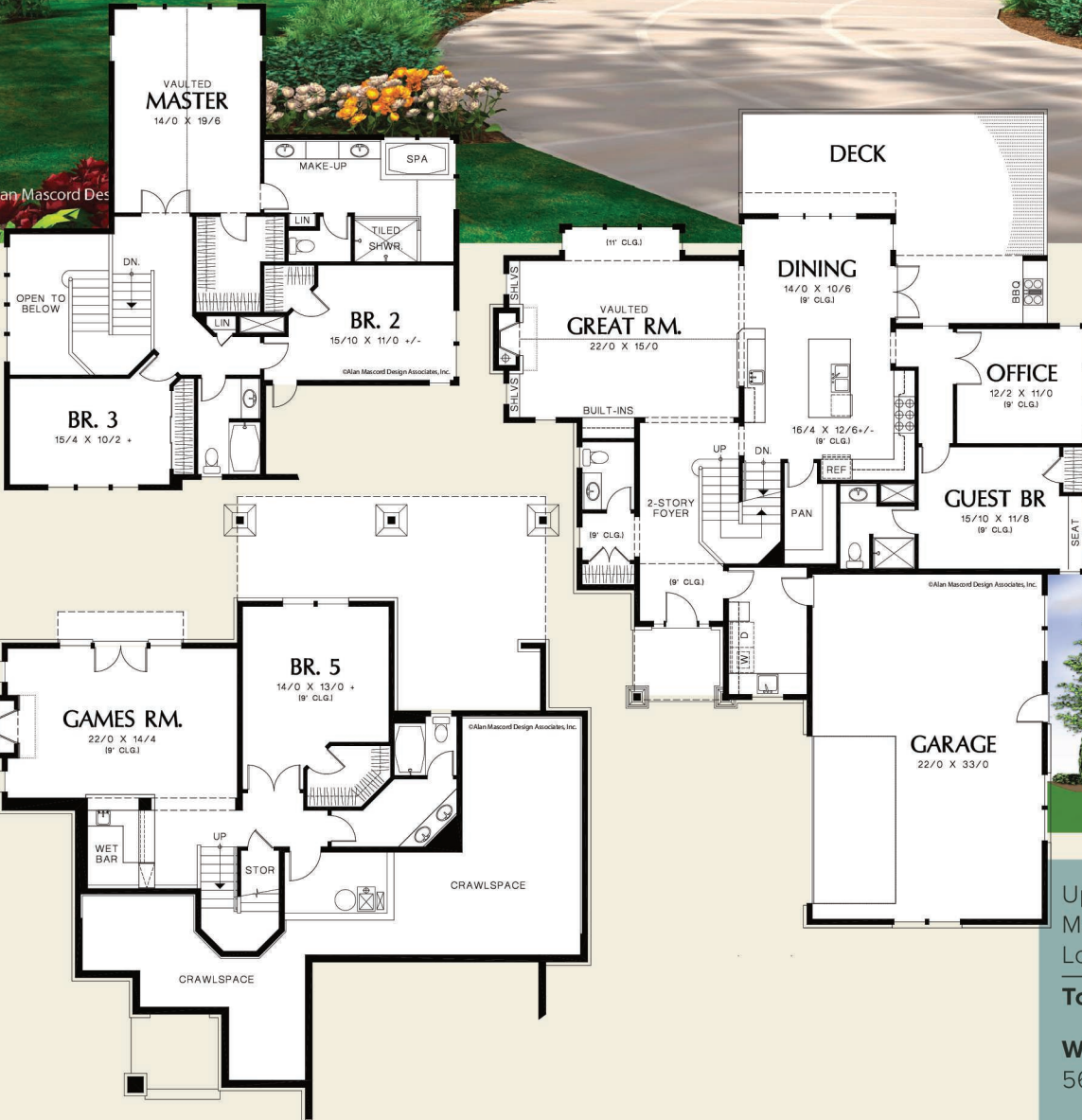




Mascord

ALAN MASCORD DESIGN ASSOCIATES, INC.

The Iverson 2387



Upper Floor	1207 Sq. Ft
Main Floor	1735 Sq. Ft
Lower Floor	984 Sq. Ft
Total Area	3926 Sq. Ft

Width 56'-0"
Depth 70'-0"

Height (Main Flr to Peak): 28'-11"
(to Midpt of Roof): 23'-4"

Plan Designed for Sloping Lots



ALAN MASCORD DESIGN ASSOCIATES, INC
2187 NW Reed St, Suite 100, Portland, OR 97210 · 503.225.9161

mascord.com | houseplans.co