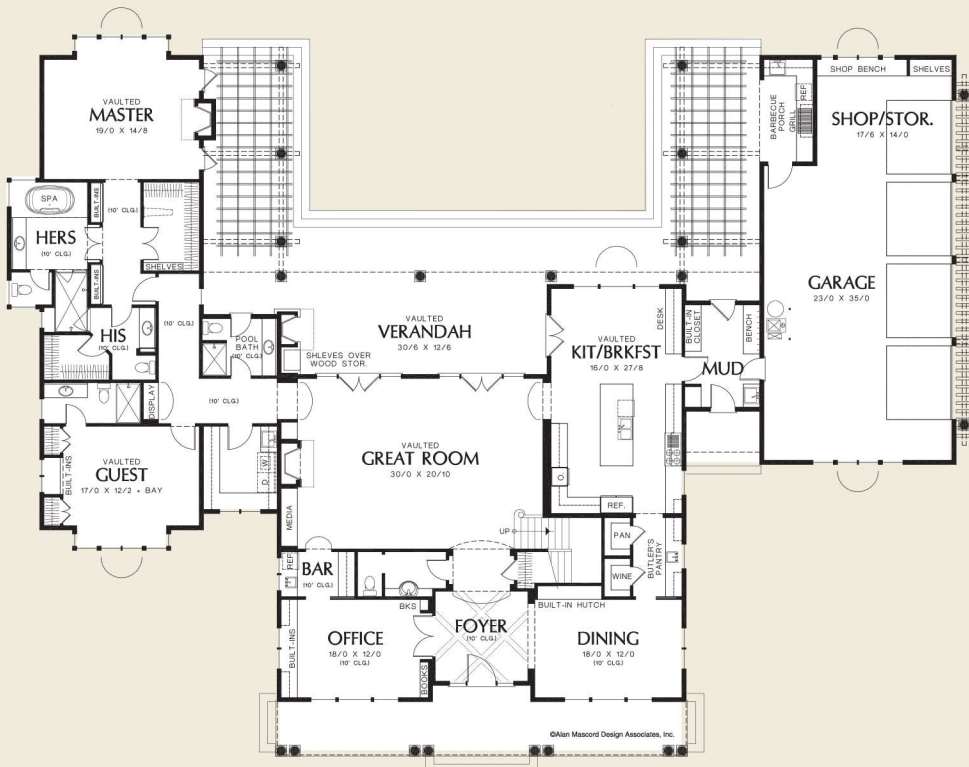




Mascord

ALAN MASCORD DESIGN ASSOCIATES, INC.

The Seligman
2443



Upper Floor	990 Sq. Ft
Main Floor	3800 Sq. Ft
Total Area	4790 Sq. Ft
Width	Depth
116'-0"	88'-0"

Height (Main Flr to Peak): 32'-8"
(to Midpt of Roof): 26'-0"



ALAN MASCORD DESIGN ASSOCIATES, INC
2187 NW Reed St, Suite 100, Portland, OR 97210 · 503.225.9161

mascord.com | houseplans.co