

Price Category

Plan 2235 Richardson



Upper Floor	470 Sq. Ft.
Main Floor	1744 Sq. Ft.
Lower Floor	127 Sq. Ft.
Total Area	2341 Sq. Ft.

Width 53' Depth 44'
Height 37' Crawlspace/Slab

Plan designed for sloping lot.

STYLE, SPACE, COMFORT

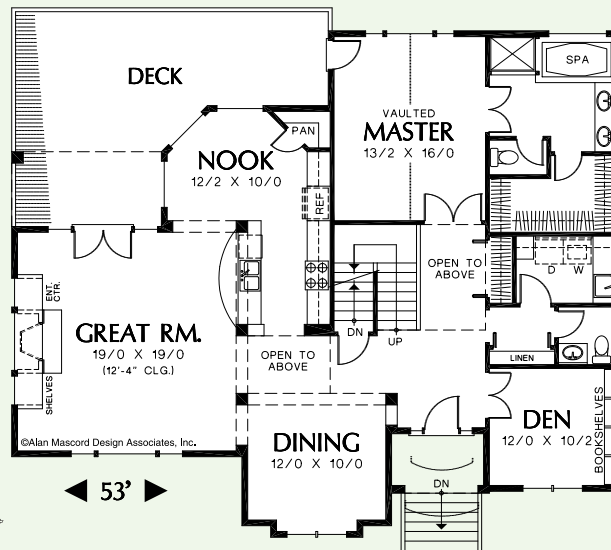
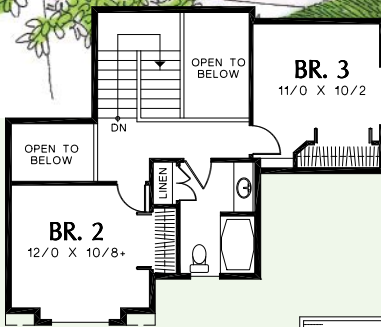
Indulge your family with style, space, and comfort in this three-level home, which features a first-floor master suite, a secluded den with built-in bookshelves, lively changes in ceiling heights, and lots of storage space.

A central staircase ascends to sleeping quarters with two bedrooms and a bath. The staircase descends to a two-car garage and shop with leftover space to store bikes, lawn and garden tools, and sporting equipment. The windowed storage room could also be used as a game or hobby room.

The public area of the home includes a spacious great room with a fireplace flanked by high windows. A built-in entertainment center and shelving are situated beneath the windows. French doors offer passage to a deck. The kitchen is separated from the great room only by the sink peninsula, which is anchored at each end by stately columns. Both the casual breakfast nook and the formal dining room are near the kitchen, facilitating meal service.

The master suite is worthy of dreams. The large bedroom features a vaulted ceiling and a door to the deck. Double doors lead to the bath with a shower, whirlpool tub, and private toilet enclosure.

© 1997 Alan Mascord Design Associates, Inc.
All rights reserved.



44'

53'

