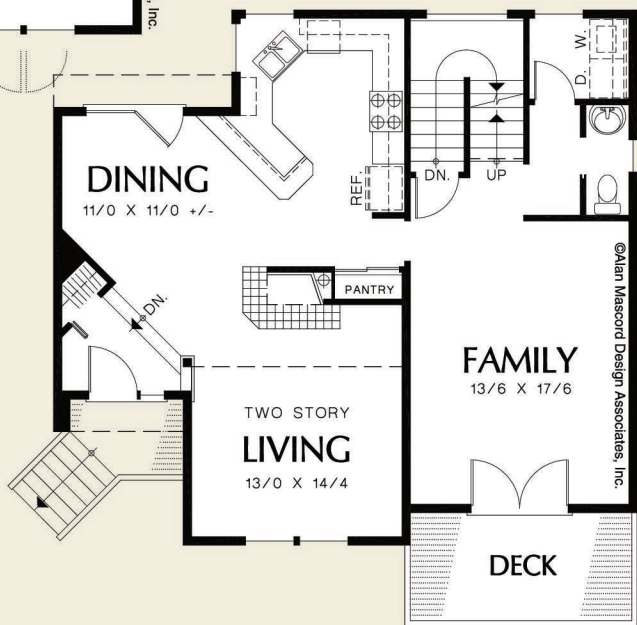




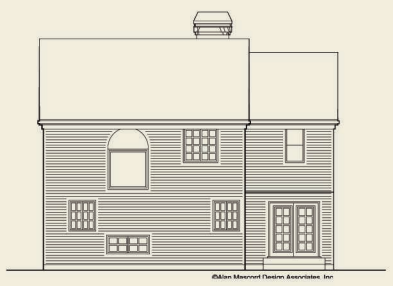
© Alan Mascord Design Associates, Inc.



©Alan Mascord Design Associates, Inc.



©Alan Mascord Design Associates, Inc.



©Alan Mascord Design Associates, Inc.

Upper Floor	813 Sq. Ft
Main Floor	1022 Sq. Ft
Total Area	1835 Sq. Ft
Width 36'-0"	Depth 33'-0"
Height	(Main Flr to Peak): 36'-1" (to Midpt of Roof): 31'-4"
Plan Designed for Sloping Lots	



ALAN MASCORD DESIGN ASSOCIATES, INC
2187 NW Reed St, Suite 100, Portland, OR 97210 · 503.225.9161

mascord.com | houseplans.co