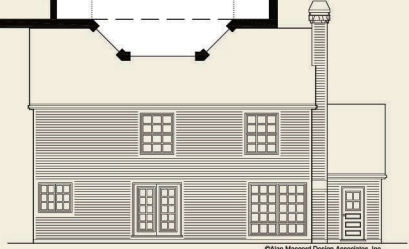
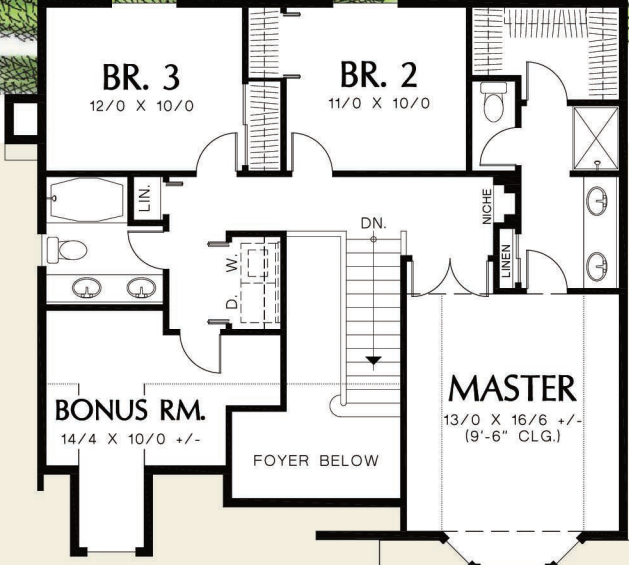
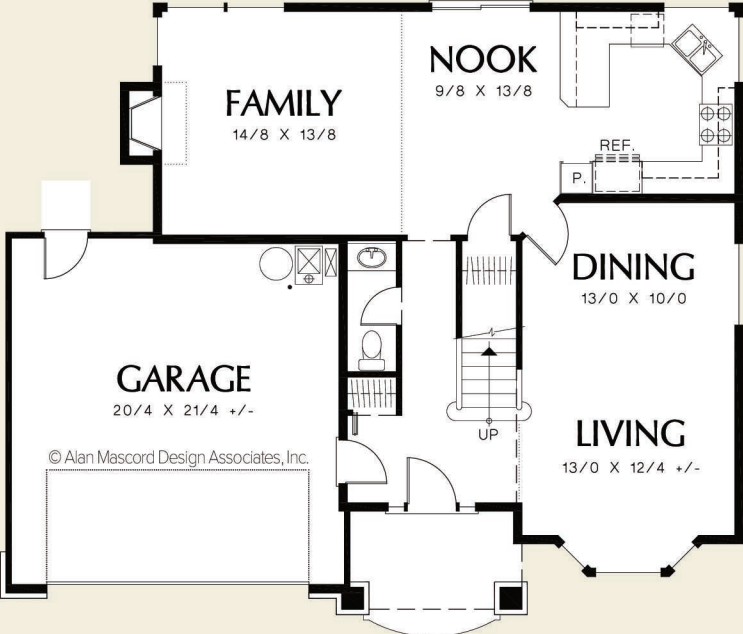


Mascord

The Stayton
2138



©Alan Mascord Design Associates, Inc.



©Alan Mascord Design Associates, Inc.

Upper Floor	843 Sq. Ft
Main Floor	972 Sq. Ft
Sub Total	1815 Sq. Ft
Bonus	+180 Sq. Ft
Width	Depth
45'-0"	37'-0"
Height	(Main Flr to Peak): 27'-0"
	(to Midpt of Roof): 22'-0"



ALAN MASCORD DESIGN ASSOCIATES, INC
2187 NW Reed St, Suite 100, Portland, OR 97210 · 503.225.9161
mascord.com | houseplans.co