



Price Category  
**Plan 22115**  
 Bradford

Upper Floor	1038 Sq. Ft.
Main Floor	1158 Sq. Ft.
Lower Floor	760 Sq. Ft.
Total Area	2196 Sq. Ft.

Width 34'6"      Depth 42'  
 Height 39"      Slab

Plan designed for sloping lot.

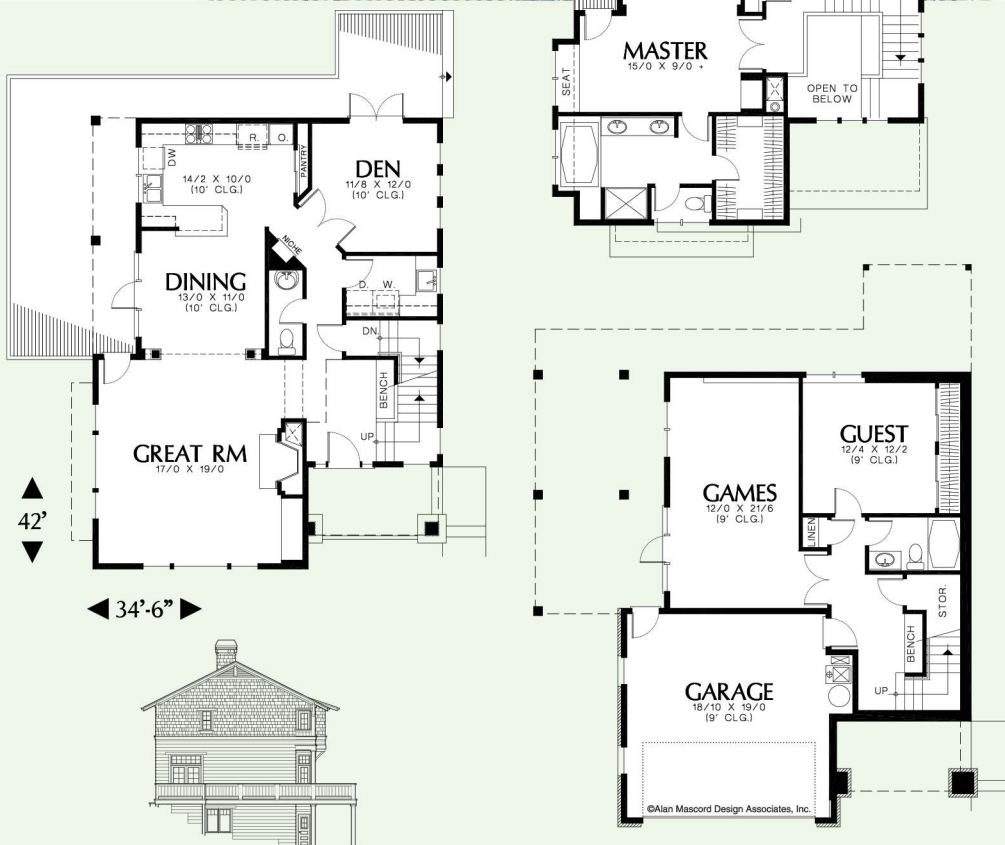
### COMFORTABLE CRAFTSMAN

Create family memories to last forever in this luxurious home. There's living space on three floors, plus a covered front porch and an extensive tri-level deck. Built-in details—columns and benches, display niches and storage units—convey a sense of Craftsman style and comfort.

The main floor is designed for family life and gracious entertaining. Step into the two-story formal foyer, made comfortable with a bench. To the left, the huge great room is furnished with a fireplace and built-in media center. French doors in both the great room and dining room open this communal area to the deck. For quiet times, retreat to the corner den, which also opens to the deck.

Hospitality extends to the foundation level, which hosts a generously-sized game room and a bedroom and bath suite for guests.

Family bedrooms are on the top floor. The plush master suite includes a bedroom large enough for sleeping and sitting areas. The sitting area features a window seat, built-in shelving, and a private deck. The two additional bedrooms are fitted with large closets and their own sink vanities.



©Alan Mascord Design Associates, Inc.

ALAN MASCORD DESIGN ASSOCIATES, INC.  
 1305 NW 18th Ave., Portland, OR 97209 ■ 503.225.9161 ■ fax 503.225.0933  
 www.mascord.com

© 1999 Alan Mascord Design Associates, Inc.  
 All rights reserved.