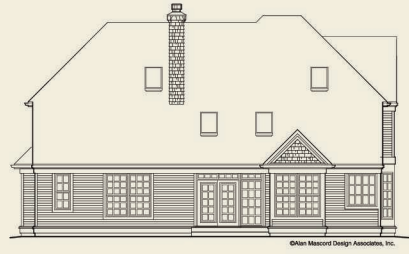
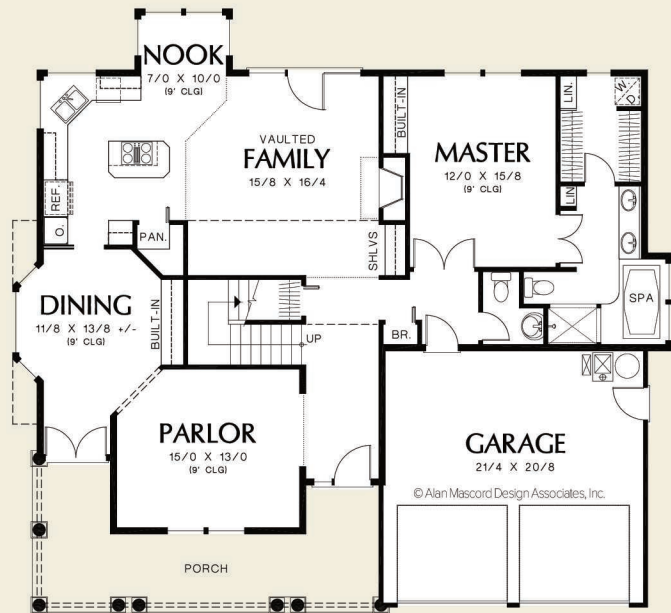
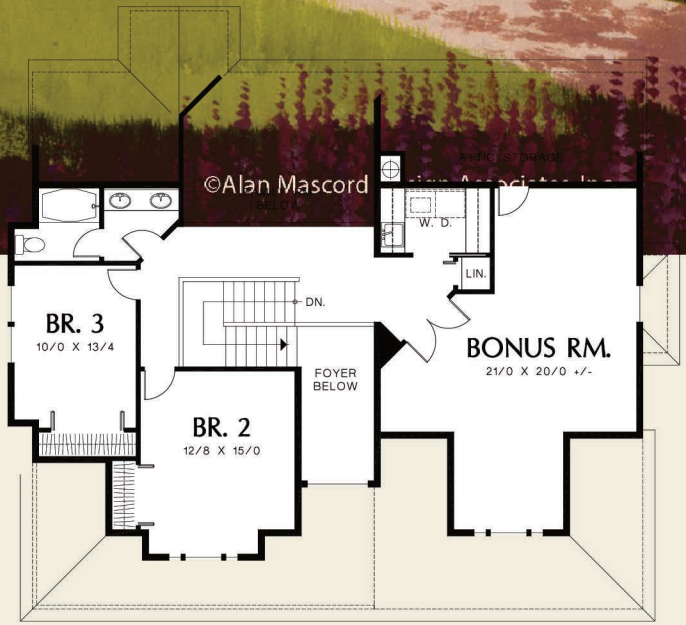




*Mascord*  
ALAN MASCORD DESIGN ASSOCIATES, INC.

The Lyndon  
**2281**



Upper Floor	716 Sq. Ft
Main Floor	1587 Sq. Ft
<b>Sub Total</b>	<b>2303 Sq. Ft</b>
<b>Bonus</b>	<b>+427 Sq. Ft</b>
<b>Width</b>	<b>Depth</b>
54'-0"	49'-0"
<b>Height</b>	(Main Flr to Peak): 30'-6"
	(to Midpt of Roof): 24'-3"



ALAN MASCORD DESIGN ASSOCIATES, INC  
2187 NW Reed St, Suite 100, Portland, OR 97210 · 503.225.9161  
mascord.com | houseplans.co