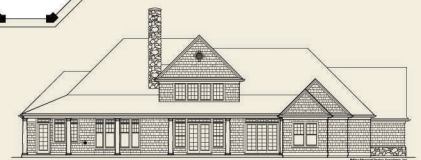
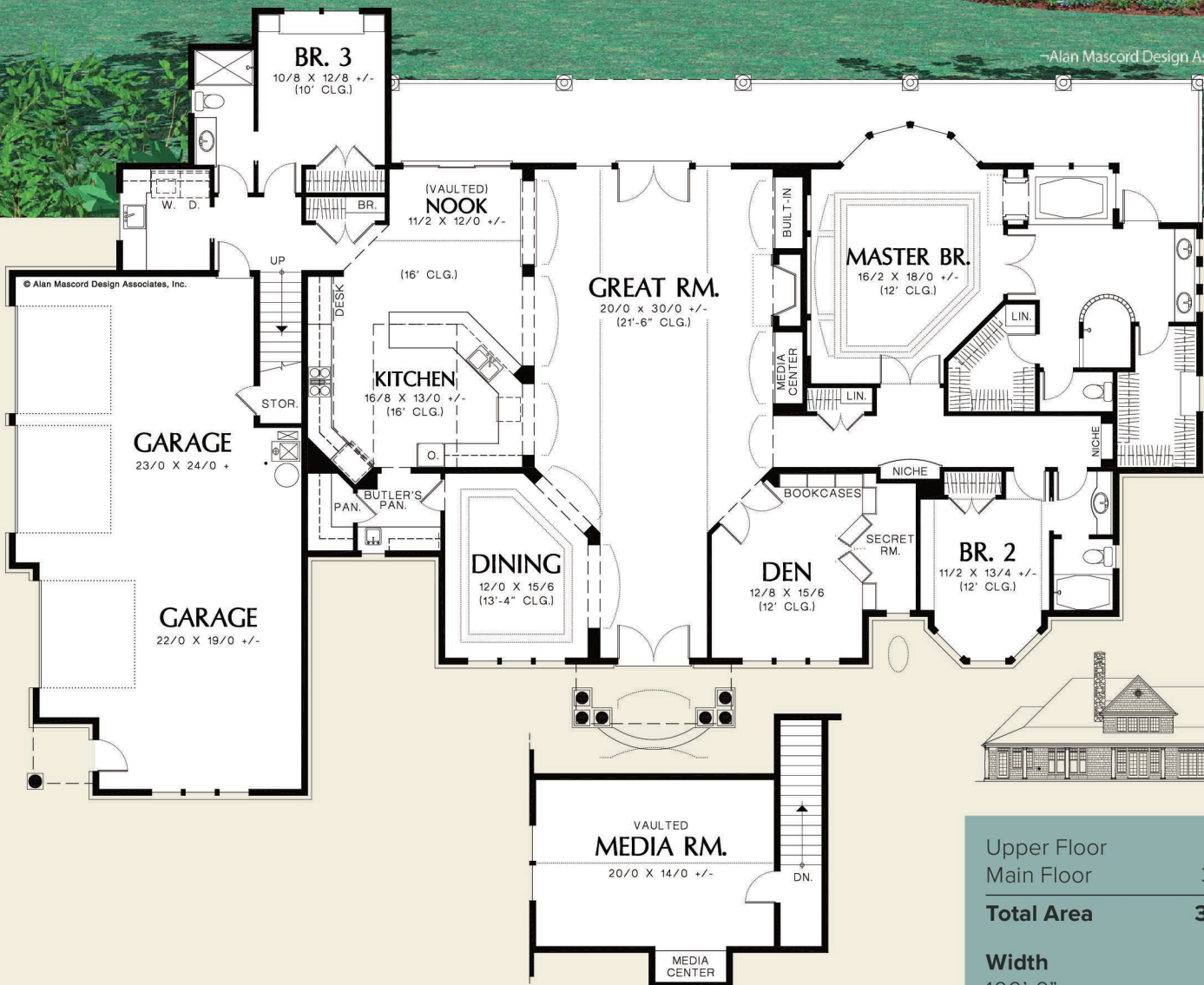




—Alan Mascord Design Associates, Inc.



Upper Floor	365 Sq. Ft
Main Floor	3298 Sq. Ft
Total Area	3663 Sq. Ft
Width	100'-0"
Depth	66'-0"
Height	(Main Flr to Peak): 31'-0" (to Midpt of Roof): 25'-3"



ALAN MASCORD DESIGN ASSOCIATES, INC
2187 NW Reed St, Suite 100, Portland, OR 97210 · 503.225.9161
mascord.com | houseplans.co