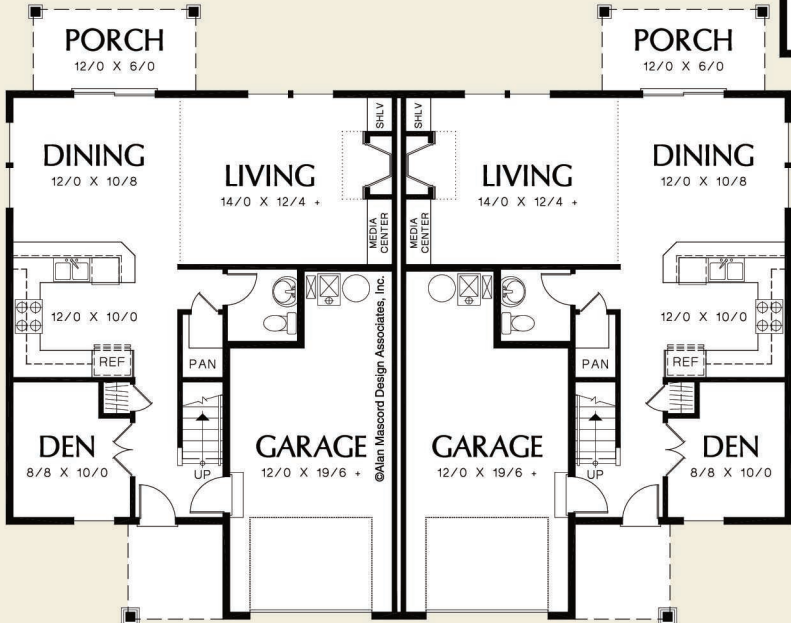
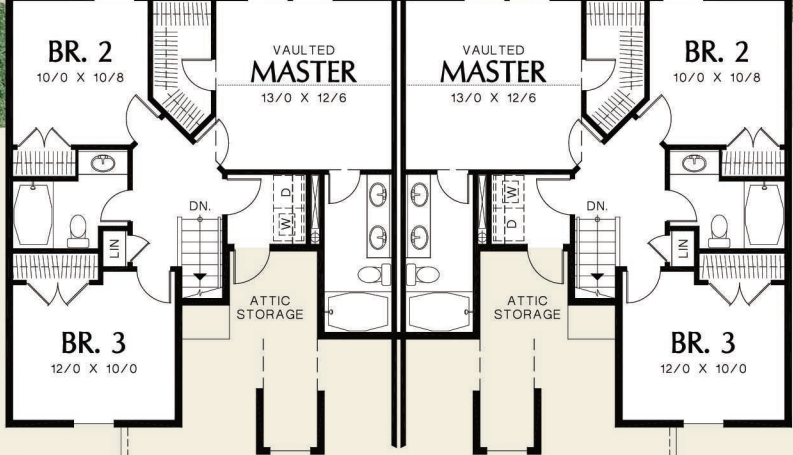




© Alan Mascord Design Associates, Inc.

© Alan Mascord Design Associates, Inc.

© Alan Mascord Design Associates, Inc.



Upper Floor	752 Sq. Ft
Main Floor	723 Sq. Ft
Total Area	1475 Sq. Ft
Width	29'-0"
Depth	39'-0"
Height	(Main Flr to Peak): 26'-4" (to Midpt of Roof): 21'-8"



ALAN MASCORD DESIGN ASSOCIATES, INC
2187 NW Reed St, Suite 100, Portland, OR 97210 · 503.225.9161
mascord.com | houseplans.co